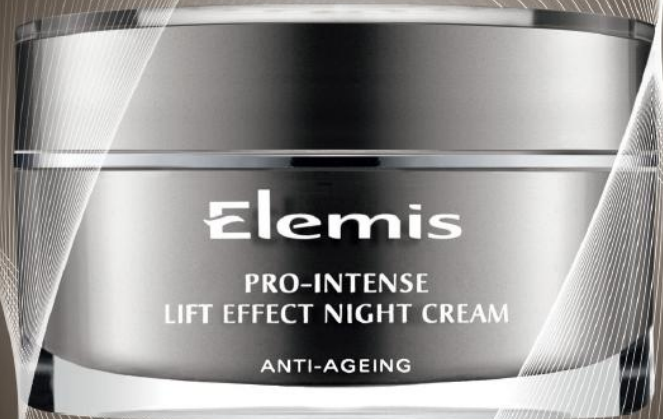


NEW

PRO-INTENSE LIFT EFFECT NIGHT CREAM

shape, lift and firm



INDEPENDENT CONSUMER TRIALS

Pro-Intense Lift Effect Night Cream delivered impressive results during consumer tests after just 4 weeks.

Shape

78%

of users felt the product helped improve texture and tone of their skin*

Lift

75%

of users felt the product helped leave skin feeling firmer*

Firm

62%

of users felt the product helped to leave skin looking more lifted*

*User Trials December 2012 based on 57 users over 60 days.

During the day the skin needs protection and moisturisation however overnight, whilst the body is relaxed and your breathing is deeper, you have the ability to oxygenate your skin cells. That said, the skin is a very lazy organ. It needs stimulation to encourage it to work hard and function at its peak. As you age, the renewal cycle slows down and skin loses its elasticity. The building blocks of the skin start to flatten, so what you see in the mirror as a result is drooping and sagging in the cheeks and jowls area.

Introducing **Pro-Intense Lift Effect Night Cream**, the latest addition to the Pro-Intense Lift Effect programme, harnessing the science of plant stem cell technology. Designed to target the sagging of jowls, cheeks and chin, this rich cream layers the lipid barrier and works overnight to stimulate the cell's biological energy cycle to deliver a lift effect.

The result? Facial contours appear shaped and skin texture visibly improved.





Lupin

Reduces the volume of the jowls and sagging of the facial contours.



Arjuna Bark Extract

Actively lifts jowls and combats skin sagging whilst improving the skin's overall resiliency.



Gardenia Plant Stem Cells

Reduces the breakdown of essential support molecules to prevent loss of firmness.



Alaria Esculenta

Preserves skin elasticity and suppleness by reinforcing the 'cushioning' of the skin, visibly improving skin texture.

THE SCIENCE – ADVANCED SIGNS OF AGEING

SLOW CELL METABOLISM

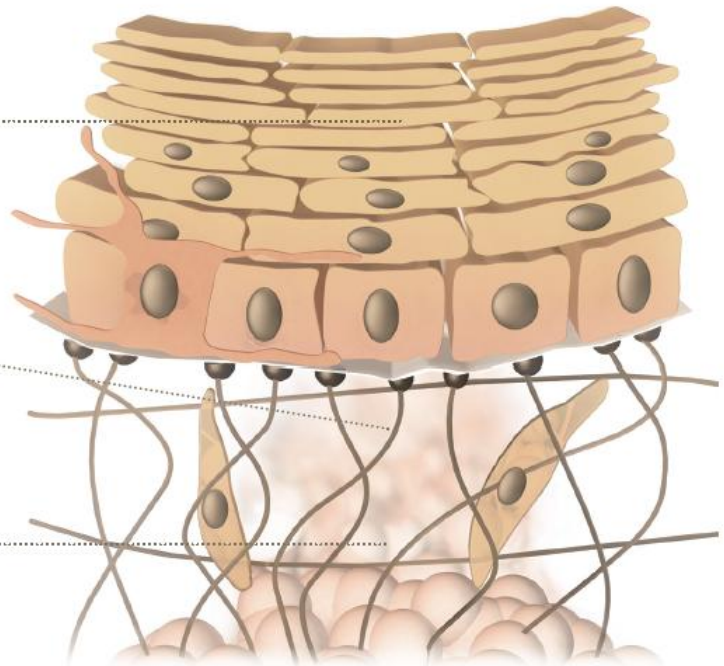
Skin cells become sluggish with less energy as we age. Without younger, robust cells, the skin's structure becomes weak and flattened. The Pro-Intense Lift Effect programme stimulates the skin's biological energy cycle to help improve skin function, for a visible lift effect and long-term anti-ageing results.

DESTRUCTIVE NATURALLY OCCURRING

As we age, these natural enzymes in the skin destroy our structural proteins, flattening skin cells and slowing down their reproduction.

SKIN'S BIOELECTRICAL COMMUNICATION

Over time lifestyle and age interrupt our skin's bioelectrical energy, causing a chain reaction of less communication between cells and the inability to repair, re-energise and act as young skin.



Pro-Intense Lift Effect Night Cream targets sagging cheeks and the jowl area. This rich, overnight cream stimulates the skin's biological energy cycle to deliver a lifting effect.

shape, lift and firm

Available in November 2013 at Elemis Spa at the St.Regis Bangkok, Anantara Spa, Mandara Spa, The Spa by MSpa at the Four Seasons Hotel Bangkok, and Royal Garden Spa at Pattaya Marriott Resort and Spa.

Pro-Intense Lift Effect Night Cream 50 ml Price: THB 8,850